

Versahaul Motorcycle Carrier

model series: 2011-VH

****Free ground shipping within the lower 48 United States!***

U.S. Rack, Inc. : 1.888.877.2257



[back to home page](#)



Single Dirt Bike Carrier with Ramp

The Versahaul™ design features lead the way.



SINGLE MOTORCYCLE CARRIER Model 2011-VH-55-RO

- The Single Motorcycle carrier with Ramp is a complete system that lets you easily load and carry a single dirt bike weighing up to 500 lbs. Width of tire must be no more than 5.5" wide.
- This system also includes a receiver to haul a trailer weighing up to 3,000 lbs. behind it!
- Fits Class III or IV Hitches
Most Class III hitches are rated for 500 lbs.
Most Class IV hitches are rated for 1000 lbs.
- Fabricated entirely from sturdy, powder coated steel



Model 2011-VH-55-RO

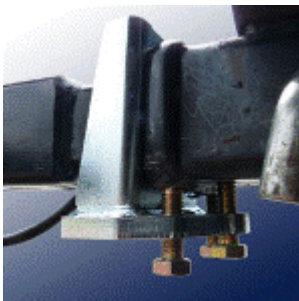
- Mounts, dismounts, and stores easily
- Reversible Rails
- Dimensions: Carrier rail length -71.5"
Carrier rail width – 6.375"
Ramp length – 60"
Ramp width – 5.5"
- Shipping weight 94 lbs.

Special Features Common to VersaHaul products include the following:



Box Design

The superior design of the base rail is stiffer than the U-channel used by some competing products. This prevents twisting and bending and allows you to transport your bike safely and with peace of mind.



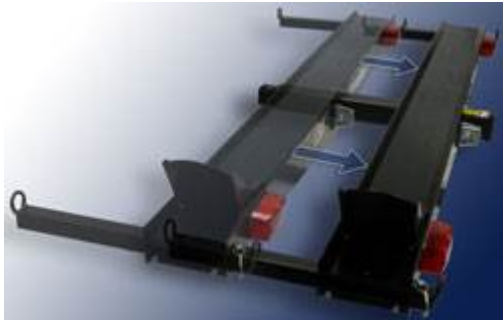
Anti-Tilt Lock Bracket

The patented anti-tilt lock bracket is designed to increase stability of any hitch mounted product. It

DOUBLE MOTORCYCLE CARRIER Model 2011-VH-55-DMRO

- The Double Motorcycle carrier with Ramp is a complete system that lets you easily load and carry two dirt bikes with a combined weight of up to 600 lbs. Width of tires must be no more than 5.5" wide
- This system also includes a receiver to haul a trailer weighing up to 3,000 lbs. behind it!
- Fits Class III or IV Hitches
Most Class III hitches are rated for 500 lbs.
Most Class IV hitches are rated for 1000 lbs.
- Fabricated entirely from sturdy, powder coated steel
- Mounts, dismounts, and stores easily
- Reversible Rails
- Dimensions: Carrier rail length -71.5"
Carrier rail width – 6.375"
Ramp length – 60"
Ramp width – 5.5"
- Shipping weight 138 lbs.

eliminates most the movement commonly found in hitch-mounted systems resulting from mating parts together.



Moveable Rail

You shouldn't have to worry about hauling a spare tire or a bumper that is too big. If your vehicle can take the weight, this carrier will let you haul it. VersaHaul was designed with a moveable rail that allows you to move the rail closer or farther from your vehicle



Double Dirt Bike Carrier with Ramp

SPORT MOTORCYCLE CARRIER Model 2011-VH-SPORT-RO

- The Sport Motorcycle carrier with Ramp is a complete system that lets you easily load and carry a single street bike weighing up to 600 lbs. Width of tire must be no more than 7.625" wide
 - This system also includes a receiver to haul a trailer weighing up to 3,000 lbs. behind it!
 - Fits Class III or IV Hitches.
Most Class III hitches are rated for 500 lbs.
Most Class IV hitches are rated for 1000 lbs.
 - Fabricated entirely from sturdy, powder coated steel
 - Mounts, dismounts, and stores easily
 - Reversible Rails
 - Dimensions: Carrier rail length -77.5"
Carrier rail width - 7.625"
Ramp length - 71"
Ramp width - 7.625"
 - Shipping weight 111 lbs.
-

ATV and Go-Kart CARRIER Model 2011-VH-90-RO

- The ATV & Go-Kart carrier with Ramp is a complete system that lets you easily load and carry an ATV or Go-Kart weighing up to 700 lbs. Width of tire must



Model 2011-VH-55 DMRO

More Special Features Common to VersaHaul products Include the following:



Reversible Rail

The versatility of the VersaHaul doesn't stop at the sliding rail. The rails are completely reversible, so you can load the bike from either side, especially important if you have an offset spare tire or ladder on one side



Towing Hitch

The VersaHaul is the ONLY motorcycle carrier with a Class III hitch at the end of the carrier. That means you can haul trailers up to 3,000 lbs. behind your bike

be no more than 9.25" wide

- This system also includes a receiver to haul a trailer weighing up to 3,000 lbs. behind it!
- Fits Class III or IV Hitches.
Most Class III hitches are rated for 500 lbs.
Most Class IV hitches are rated for 1000 lbs.
- Fabricated entirely from sturdy, powder coated steel
- Mounts, dismounts, and stores easily. The distance between Rails and bumper is adjustable.
- Reversible Rails
- Dimensions: Carrier rail length -77.5"
Carrier rail width - 9.25"
Ramp length - 71"
Ramp width - 9.25"
- Shipping weight 166 lbs.

VersaHaul™ Warranty

There is a 1 year warranty against manufacturer's defects on these products. A warranty card comes with each carrier and is to be filled out by the owner and sent in. See the merchandize return policy

Free ground shipping within the lower 48 United States!

For shipping to Alaska or Hawaii,

please call 1-888-877-2257



Retractable Tie-Down Bars

This carrier includes Retractable Tie-down Bars with sturdy steel tie-down loops at the ends. Just pull out the locking pin and slide them in. You can complete confidence that your bike is secure.



Sport Bike Carrier with Ramp

**To Purchase, please call
1.888.877.2257**

MODEL	DESCRIPTION	PRICE
2011-VH-55-RO	Single Motorcycle Carrier with Ramp	\$499.00 delivered
2011-VH-55-DMRO	Double Motorcycle Carrier with Ramp	\$749.00 delivered
2011-VH-SPORT-RO	Single Sport Motorcycle Carrier with Ramp	\$599.00 delivered
2011-VH-90-RO	ATV and Go-Kart Carrier with Ramps	\$949.00 delivered
2011-VH-TK	Taillight Kit	\$49.99 delivered
2011-VH-TK LP	Taillight Kit with License Plate Light	\$59.99 delivered



Model 2011-VH-SPORT RO



Even More Special Features Common to VersaHaul products Include the following:



Adjustable Wheel Stop

Wheel stops are designed to help stabilize your bike, but they must be properly positioned to be useful. These wheel stops are adjustable to fit your bike better.



Included Reflectors

Hitch mounted trailers can cover or obscure your brake lights. This could reduce visibility at night, so a pair of reflectors is included on every carrier.



Optional Tailgate Kit

Some states require you to have a taillight kit if you extend an object beyond a certain point on your hitch. If you're worried about visibility, or are required by law to add taillights, pick up a tailgate kit with optional license plate light. This increases visibility, keeps you legal in every state across the nation, and provides you with turn signals, break lights and blinkers.



ATV and Go-Kart Carrier with Ramp



2011-VH-90 RO